

SEI QUARTETTI

PER ARCHI

Edizione riveduta e riordinata da
ENRICO POLO

LUIGI BOCCHERINI
Op. VI.

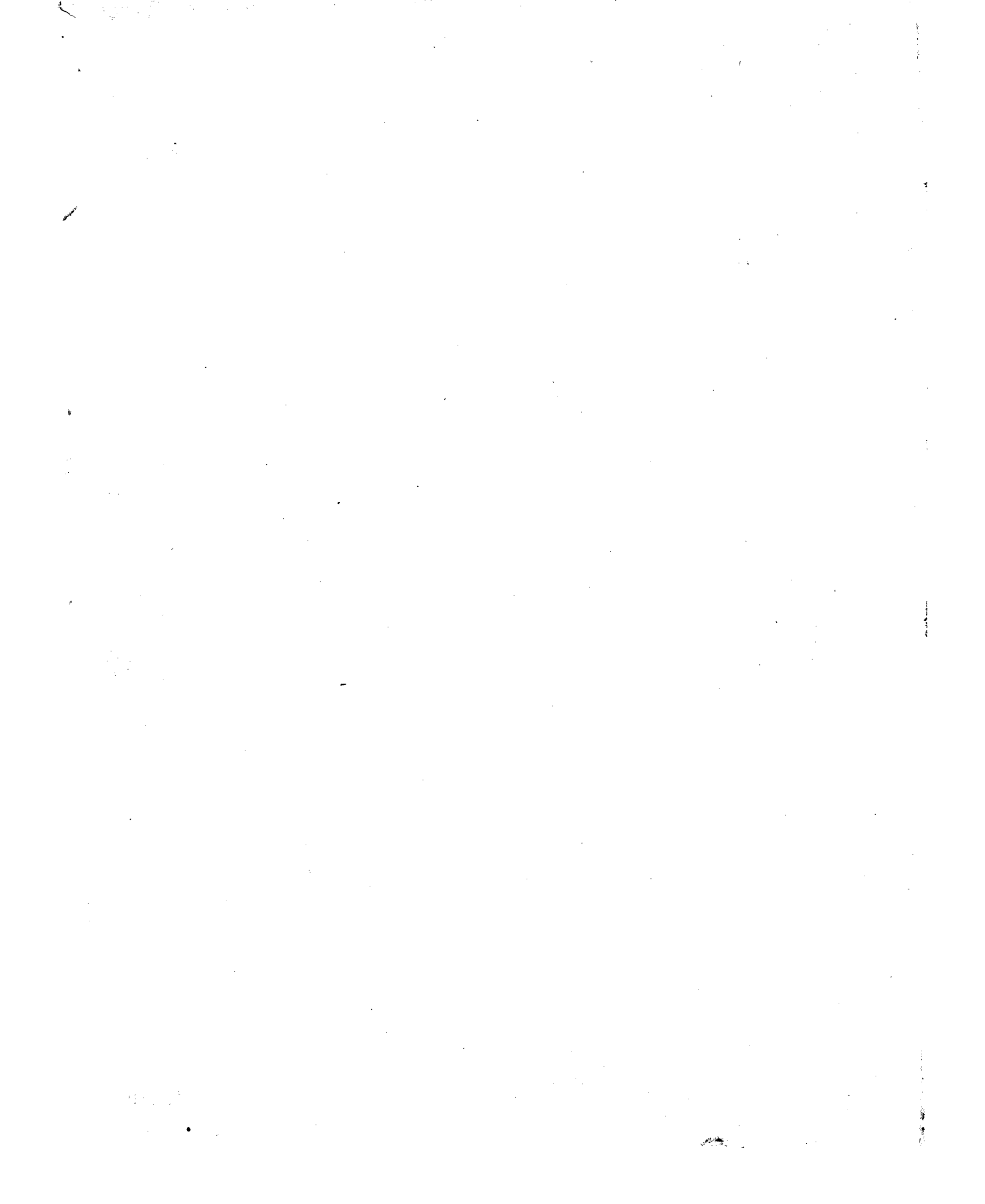
QUARTETTI IV, V e VI.

QUARTETTO IV.

VIOLA

All.^o brillante $\text{♩} = 132$

The musical score for the Viola part of Quartetto IV is written on 11 staves. It begins with a tempo marking of 'All.^o brillante' and a metronome marking of $\text{♩} = 132$. The key signature is one flat (B-flat major or D minor). The score features a variety of musical textures, including melodic lines, arpeggiated figures, and chords. Dynamics range from piano (*p*) to fortissimo (*f*), with a crescendo (*cres.*) and a dolce section. The piece ends with a final cadence.



M.
452
K. 484
v. 2

622116

VIOLA

The musical score for Viola, page 3, is written in 3/8 time and consists of 12 staves. The key signature has one flat (B-flat). The score includes various dynamics such as *p* (piano), *f* (forte), *sf* (sforzando), and *dolce* (dolce). It also features performance instructions like *tr* (trill), *cres.* (crescendo), and *sf p* (sforzando piano). The music is characterized by intricate rhythmic patterns, including sixteenth and thirty-second notes, and includes several trills and triplets. The notation includes slurs, accents, and fingering numbers (1, 2, 3) to guide the performer.

VIOLA

The musical score for Viola consists of 12 staves of music. The key signature is two flats (B-flat and E-flat), and the time signature is 3/4. The score includes various dynamics and performance markings:

- Staff 1: *sf*, *mf*, *p*. Includes a first ending bracket.
- Staff 2: *f*. Includes accents.
- Staff 3: *dolce*. Includes a first ending bracket.
- Staff 4: *p*, *cres.*
- Staff 5: *f*, *f*. Includes a *v* (vibrato) marking.
- Staff 6: *v* (vibrato) marking.
- Staff 7: *f*, *sf*, *p*. Includes a *v* (vibrato) marking.
- Staff 8: *p*, *p*. Includes a *v* (vibrato) marking.
- Staff 9: *p*, *sf*, *p*. Includes a *v* (vibrato) marking.
- Staff 10: *p*, *dim.*. Includes a *v* (vibrato) marking.
- Staff 11: *morendo*, *pp*. Includes a *v* (vibrato) marking.

Measure 63 is marked *Grave*. The score concludes with a double bar line and repeat dots.

VIOLA

p *dim. dim. dim.* *cres.*

p *pp*

p

p *cres.*

dim. *dim.*

rall. *dim.* *morendo* *pp*

$\text{♩} = 80$
All.^o non troppo *p*

p

sf p sf sf *cres.* *f* *p*

p *tr*

tr *mf*

mf *mp* *f*

p

VIOLA

The musical score for Viola on page 6 consists of eight staves of music. The key signature has one flat (B-flat) and the time signature is 12/8. The score includes various dynamics such as *p*, *sf*, *f*, *mf*, and *p cres.*. It also features trills (*tr*) and slurs. The notation includes eighth and sixteenth notes, rests, and accidentals. The piece concludes with a double bar line and repeat dots.

QUARTETTO V.

VIOLA

♩ = 412
 Andantino
 con un poco di moto

The musical score for the Viola part of Quartetto V. is written in 2/4 time with a key signature of one flat. The tempo is marked 'Andantino con un poco di moto' with a quarter note equal to 412. The score consists of 12 staves of music. Dynamics include *mp*, *p*, *pp*, *p dolce*, *sfp*, *cres.*, *f*, and *pp*. Articulation includes accents, trills (*tr*), and slurs. Phrasing includes trills and slurs. The score ends with a double bar line.

VIOLA

♩ = 96
Tempo di Minuetto
moderato

VIOLA

$\text{♩} = 92$
Allegro vivace

The musical score for Viola on page 9 is written in 3/4 time with a tempo of quarter note = 92. The key signature has one flat. The score consists of 13 staves of music. It begins with a forte (*f*) dynamic and includes various performance markings such as accents, slurs, and trills. The dynamics fluctuate throughout, including piano (*p*), fortissimo (*sf*), and piano dolce (*p dolce*). The piece concludes with a first ending bracket.

VIOLA

This musical score for Viola is written in 3/8 time and consists of 14 staves. The key signature has one flat (B-flat). The score includes various dynamics and performance instructions:

- Staff 1:** Starts with a piano (*p*) dynamic, followed by a crescendo leading to a forte (*f*) dynamic. A *V* (Violin) part is indicated above the staff.
- Staff 2:** Features a forte (*f*) dynamic throughout.
- Staff 3:** Starts with a mezzo-forte (*mf*) dynamic, then moves to forte (*f*).
- Staff 4:** Starts with mezzo-forte (*mf*), then crescendos (*cres.*).
- Staff 5:** Starts with piano (*p*), marked *cantando* (singing style).
- Staff 6:** Starts with piano (*p*), marked *dolce* (sweetly), and includes a *V* (Violin) part.
- Staff 7:** Starts with piano (*p*).
- Staff 8:** Starts with piano (*p*), marked *cres.*
- Staff 9:** Starts with piano (*p*), marked *dim.* (diminuendo), then returns to piano (*p*).
- Staff 10:** Includes a first ending bracket (*1*) and a trill (*tr*).
- Staff 11:** Starts with piano (*p*), marked *cres.*
- Staff 12:** Starts with piano (*p*), marked *sf* (sforzando).
- Staff 13:** Starts with sforzando (*sf*), then piano (*p*).
- Staff 14:** Starts with forte (*f*), marked *sf*.

QUARTETTO VI.

VIOLA

$\text{♩} = 126$
Allegro con brio

mf

p *mp* *cres.*

f *p* *cres.*

cres. *p*

f

cres. *p* *cres.*

p

f *p* *cres.*

f *dim.* *pp* *mf*

p

VIOLA

The musical score for Viola is written in 3/8 time and the key of D major (two sharps). It consists of 13 staves of music. The notation includes various dynamics such as *p* (piano), *f* (forte), *cres.* (crescendo), *dim.* (diminuendo), *rit.* (ritardando), *a tempo*, *p dolce*, and *pp* (pianissimo). There are also performance markings like *tr.* (trills), *v* (accents), and *1*, *2* (fingerings). The score concludes with a *morendo* (decrescendo) leading to *pp*.

VIOLA

$\text{♩} = 104$
Andantino amoroso

SORDINA

p dolce

p

mf *f* *fp*

p *fp*

p *mp*

pp *p* *cres.*

f *p* *p*

cantabile

p

cres. *f* *fp*

p *fp*

p *calando* *pp*

VIA
SORDINA

VIOLA

$\text{♩} = 168$
Allegro energico

1

f *f*

f

f

f *p*

f *f*

p *calando* *pp*

pp *cres.*.....*a*.....*poco*.....*a*.....*poco*..... *f*

p

cres. *ff*

f

VIOLA

Musical score for Viola, page 15. The score consists of 15 staves of music in the key of D major (two sharps) and 3/4 time. The music features a variety of dynamics and articulations. Dynamics include *f* (forte), *mf* (mezzo-forte), *mp* (mezzo-piano), *p* (piano), *pp* (pianissimo), and *ff* (fortissimo). Articulations include accents (>), breath marks (v), and slurs. Performance markings include *calando* (ritardando) and *cres.* (crescendo). The score includes several triplet figures (marked with a '3') and a first ending bracket (marked with a '1'). The piece concludes with a double bar line and the number 6270-6.

